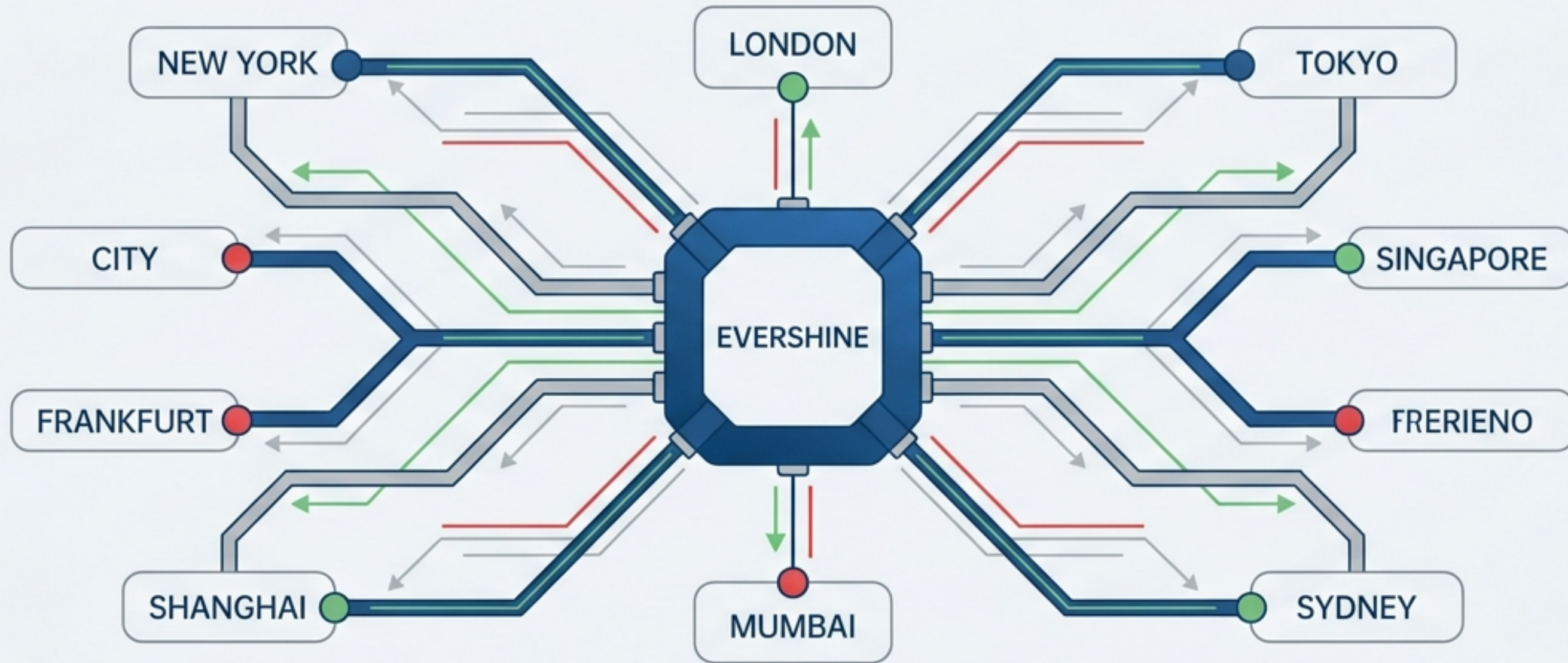


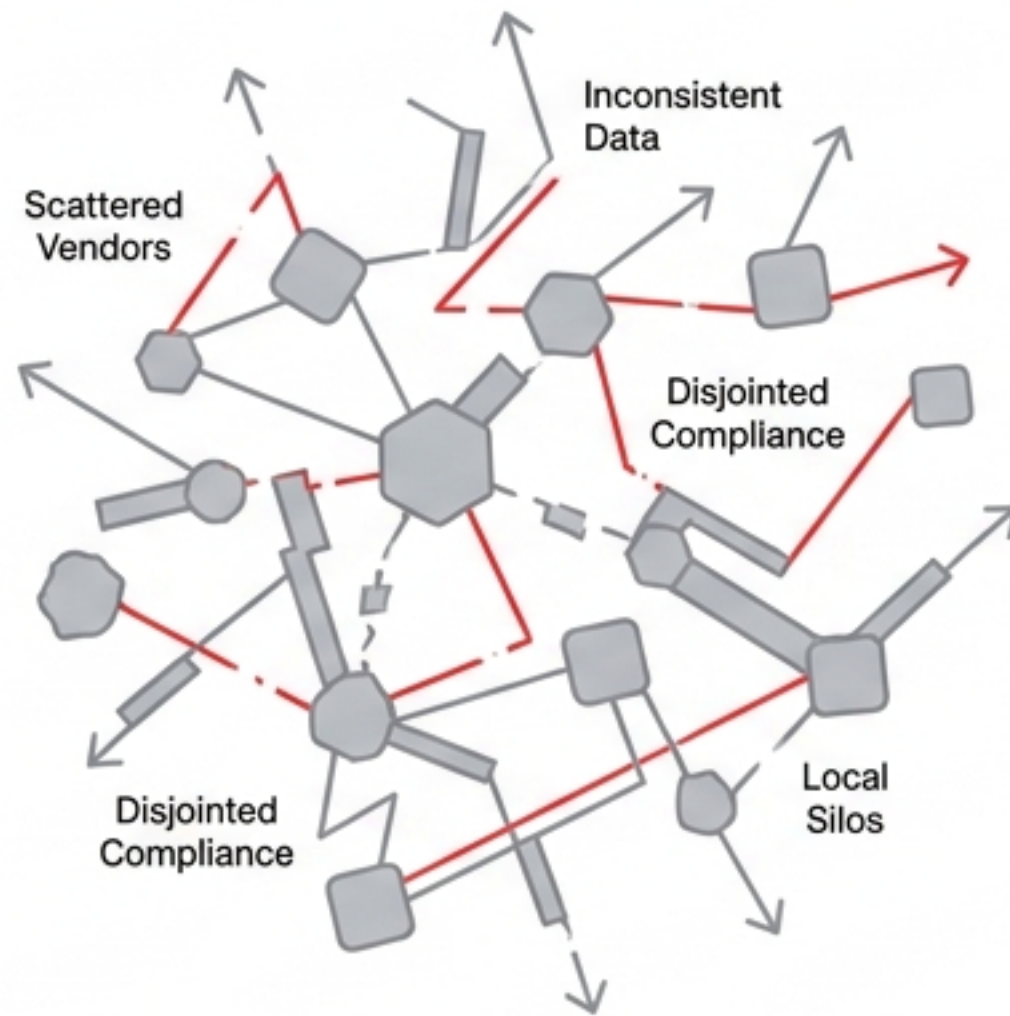
Evershine's Work Principles

Providing Trustworthy Services for Overseas Branches of Multinational Companies

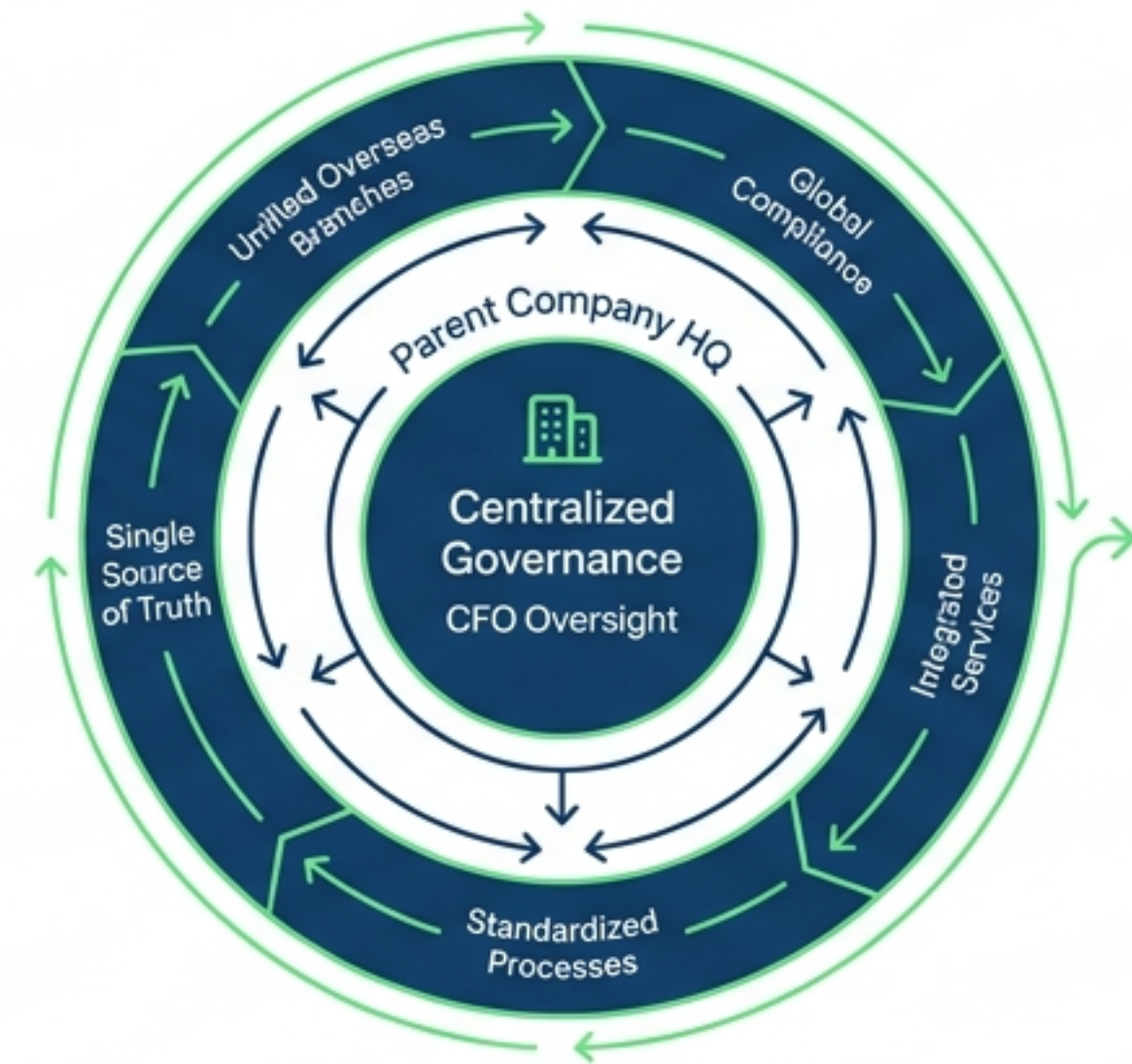


Moving from Fragmented Operations to Centralized Multinational Governance

Fragmented Overseas Operations



Cross-border + Multi-country + One-stop + Professional services



Evershine acts as the singular trust layer, allowing parent-company CFOs to safely delegate the complexity of local compliance.

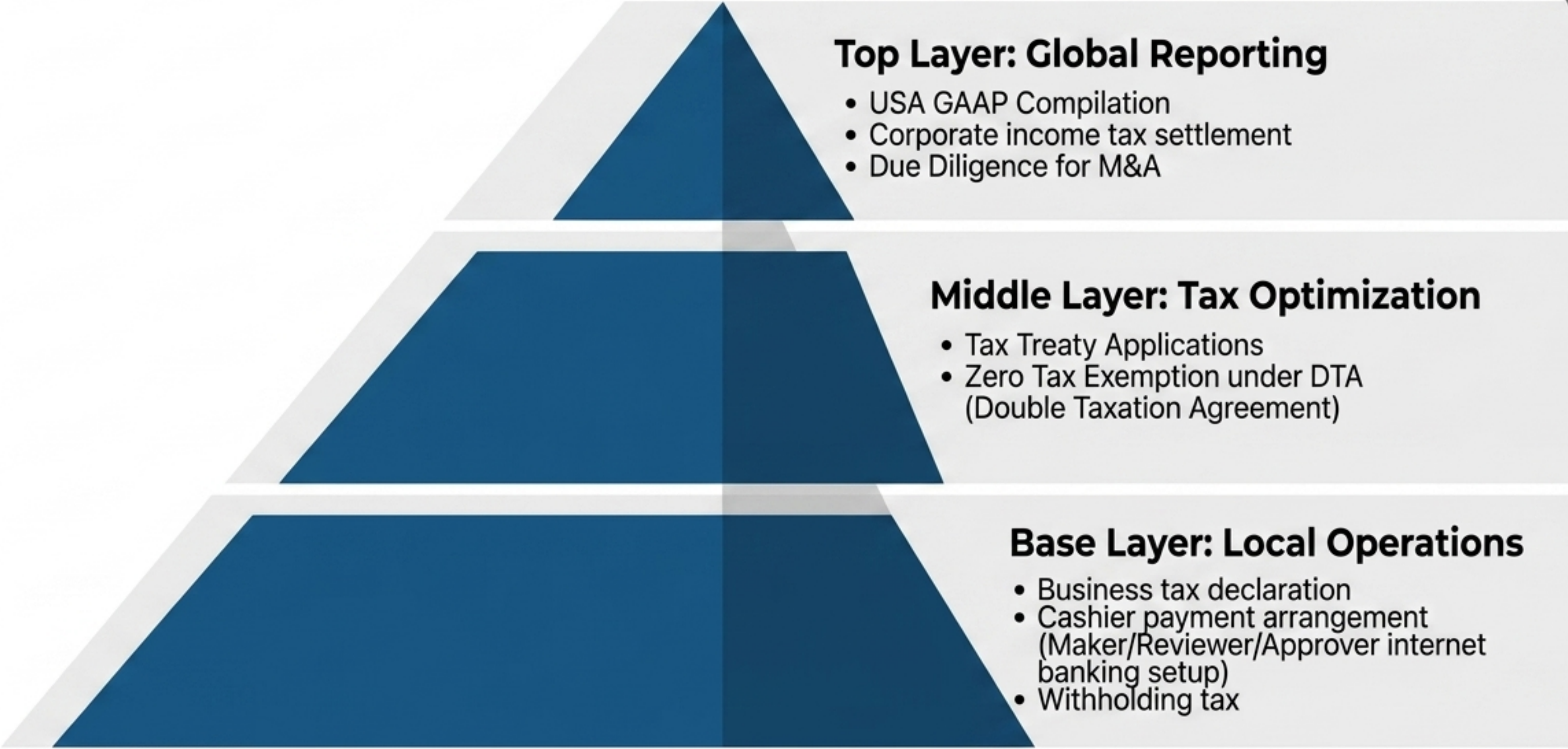
Global Wise Organized Service items and Packages



Taiwan WFOE Company Registration / Taiwan Payroll Compliance Services



Taiwan Cloud Accounting and Tax Services



Top Layer: Global Reporting

- USA GAAP Compilation
- Corporate income tax settlement
- Due Diligence for M&A

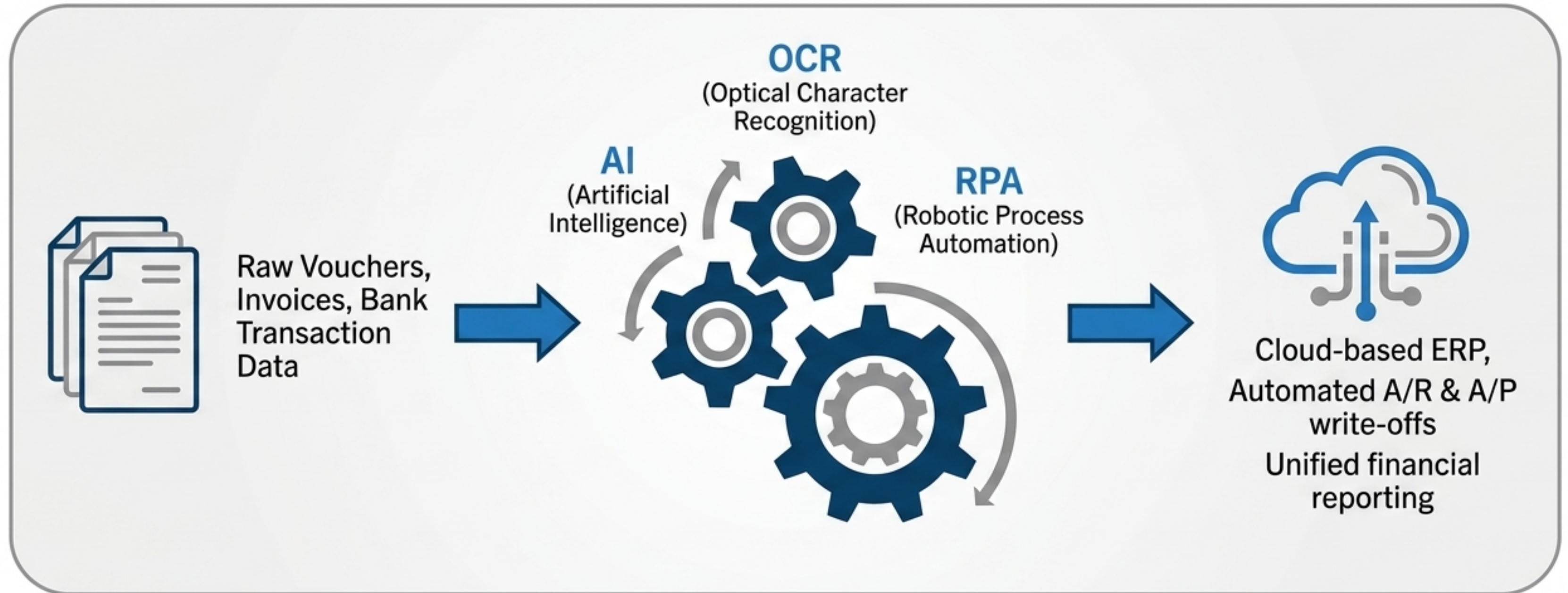
Middle Layer: Tax Optimization

- Tax Treaty Applications
- Zero Tax Exemption under DTA (Double Taxation Agreement)

Base Layer: Local Operations

- Business tax declaration
- Cashier payment arrangement (Maker/Reviewer/Approver internet banking setup)
- Withholding tax

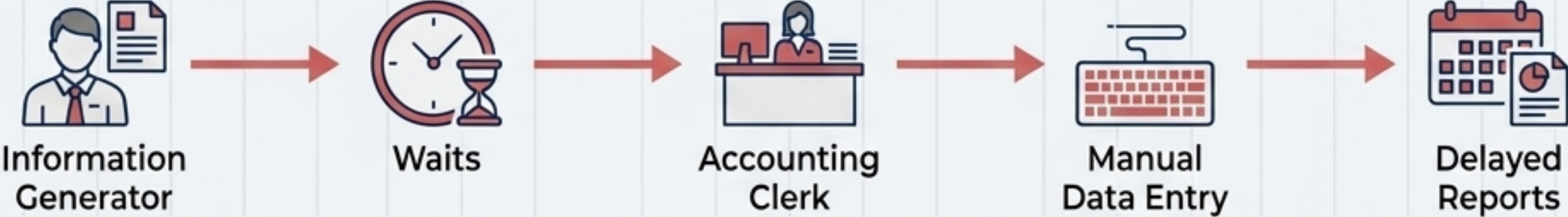
Cloud Services supported by Cloud System



The Data Central Kitchen: Massive pre-processing of documents eliminates manual bookkeeping errors and seamlessly integrates with the client's existing systems.

Business Process Outsourcing supported with RPA Robotic Process Automation

Traditional Approach



Evershine DNA: The Principle of First-Hand Input



The information generator inputs data at the **time and place** of occurrence. **No double-entry. No manual bottlenecks.**

Eliminating Friction: The S.C.R.I.P. Instant Communication Matrix

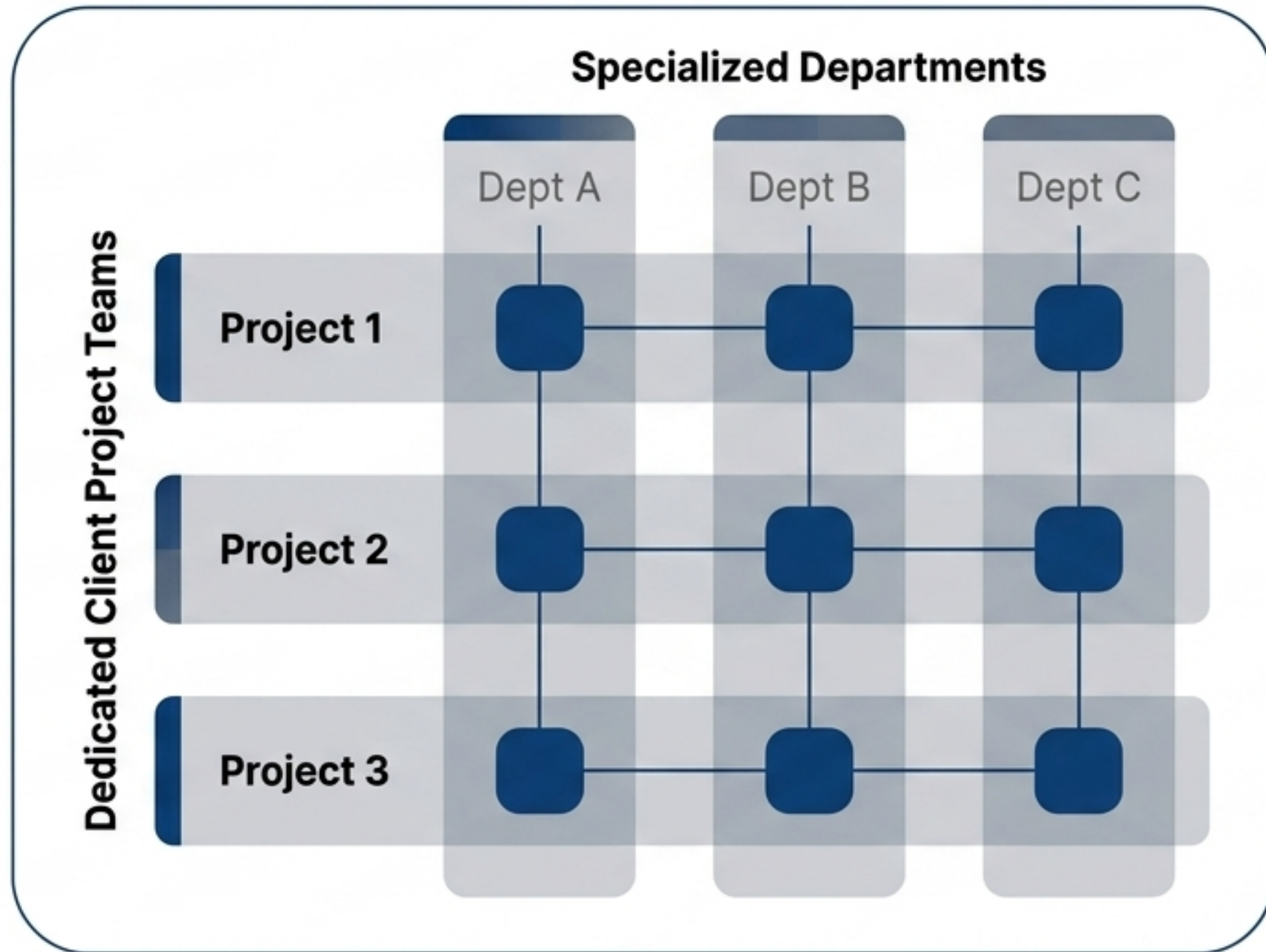


Collective Effort eliminates the middleman email chain. All stakeholders communicate directly in real-time, drastically lowering cross-border communication costs.

The Principle of Fellowship & Borderless Talent

Coexistence of Administrative Linear Organization and Project Matrix Organization

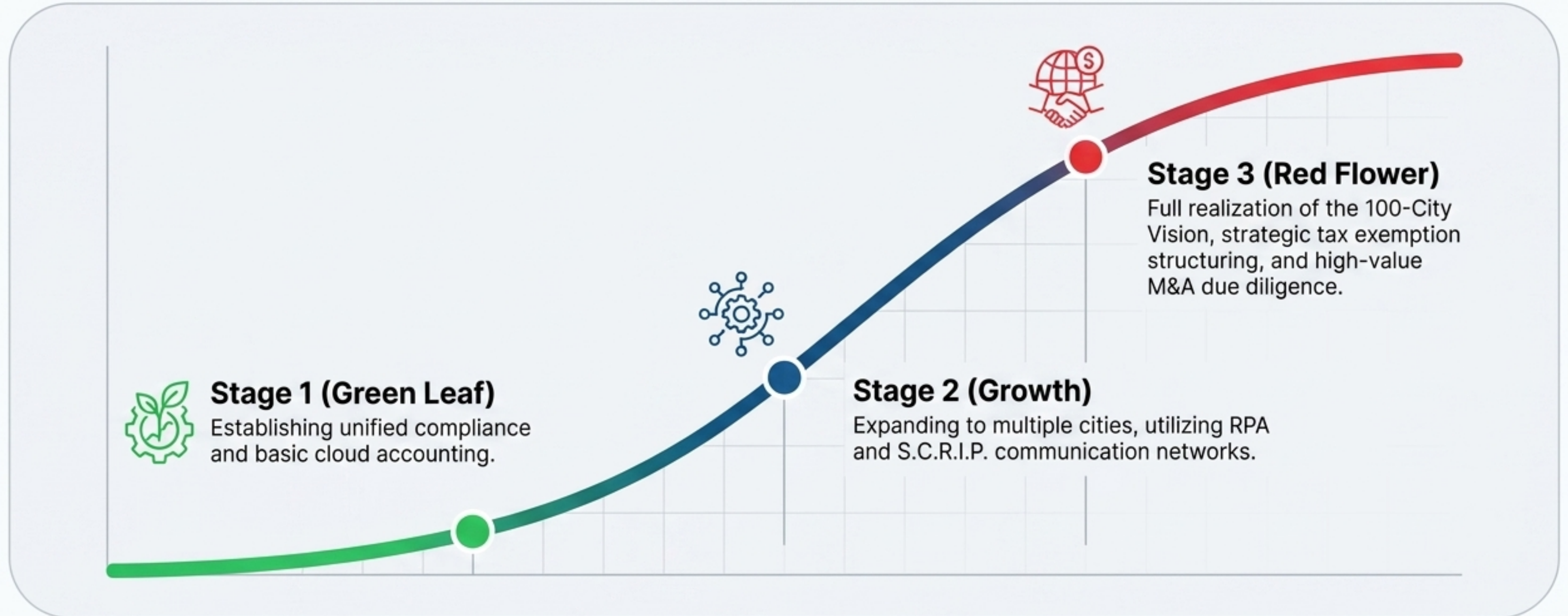
**100-City
Vision**



 **Overlapping Expertise:**
Entry-level 1-2 cross-training

 **Foreign-related personnel:**
TOEIC 860+ requirements

A Partnership Built for 100-Fold Growth



We are committed to the Principle of Tiered Services. As you expand from a single overseas branch to a massive multinational footprint, our custom architecture grows organically with you.

永輝專利師事務所

手機&Whatsapp : +886 900 000 000

Email: contact@evershinecpa.com

Website: www.evershinecpa.com

Address: 6th Floor, No. 378, Changchun Road,
Zhongshan District, Taipei City, Taiwan